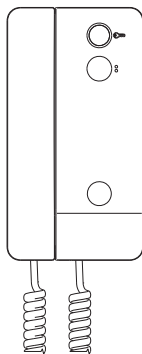


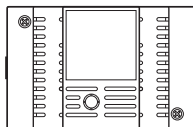


AUDIO ENTRY KIT

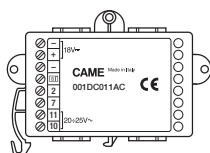
FA00959-EN



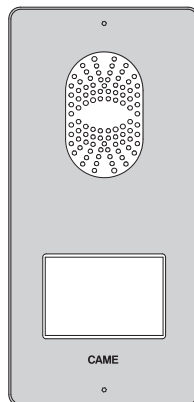
001DC02EARY



001DC002AC



001DC011AC

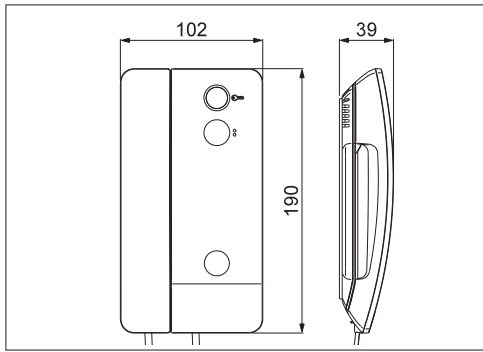


001CS1PLCO

INSTALLATION MANUAL

001CK0009

001CK0012 FR-001CK0013 FR



General Notes

- Read the instructions carefully before beginning the installation and carry out the actions as specified by the manufacturer.
 - The installation, programming, commissioning and maintenance of the product must only be carried out by qualified technicians, properly trained in compliance with the regulations in force, including health and safety measures and the disposal of packaging.
 - The installer must ensure that the information for the user, where there is any, is provided and delivered.
 - Before carrying out any cleaning or maintenance operation, disconnect the devices from the power supply.
 - The equipment must only be used for the purpose for which it was expressly designed.
 - The manufacturer declines all liability for any damage as a result of improper, incorrect or unreasonable use.
- eventuali danni derivanti da usi impropri, erronei ed irragionevoli.

This product complies with the relevant directives in force.

Decommissioning and disposal. Dispose of the packaging and the device at the end of its life cycle responsibly, in compliance with the laws in force in the country where the product is used. The recyclable components are marked with a symbol and the material's ID marker.

The data and information shown in this manual are to be considered as subject to change at any time and without the need for any advance warning. Measurements, unless otherwise indicated, are in millimetres.

001DC02EARY

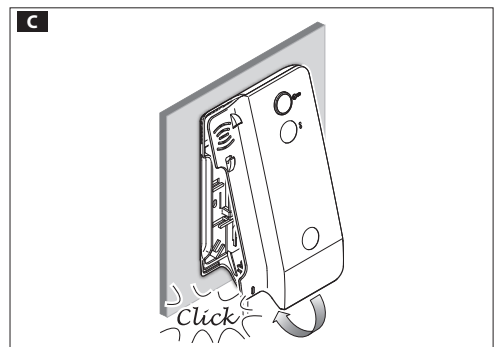
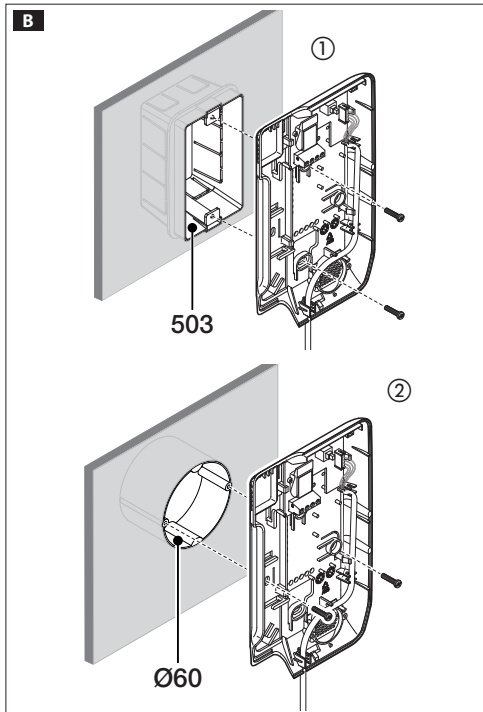
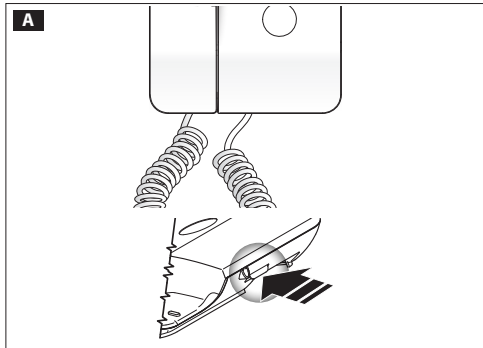
Installation

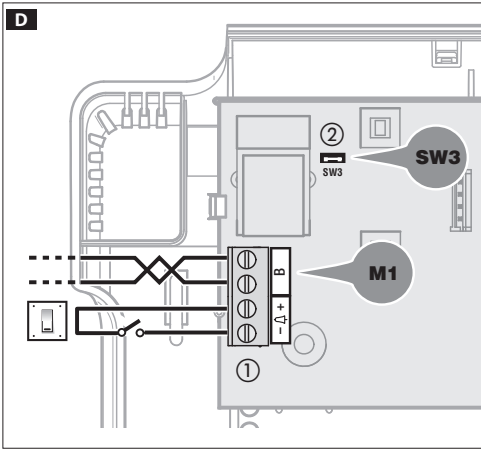
Open the unit by pressing the lever on the back **A**.

Remove the casing from the back of the unit.

Attach the back of the unit to a wall box using the screws provided **B** ① **B** ②. The box must be installed at a suitable height for the user. Do not over-tighten the screws.

Once connections have been completed, re-assemble the casing to the back of the unit **C**.





Technical features

Type	001DC02EARY
Power supply from BUS [V DC]	15 ÷ 20
Consumption max [mA]	30
Consumption in stand by [mA]	<0,5
Single LED consumption [mA]	1
Storage temperature [°C]	-25 ÷ +70
Operating temperature [°C]	+5 ÷ +40
IP Rating [IP]	30

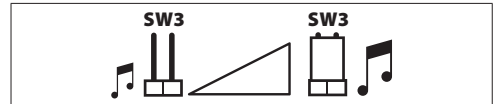
Features **D**

Terminal board ①

B BUS line input

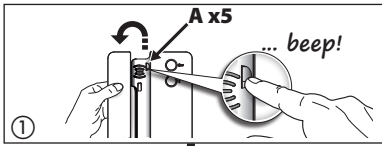
+
- Doorbell

Call attenuated ②



Melody setting

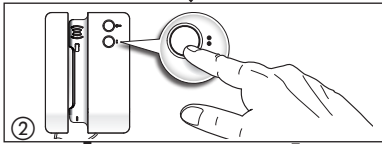
☞ All the programming stages described below must be carried out in sequence:



1-Entering programming mode

Lift up the handset and press button A 5 times in 5 seconds.

A short beep confirms that you have entered programming mode ①.

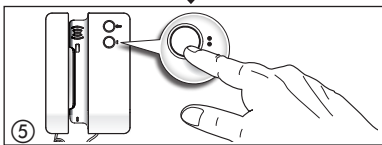
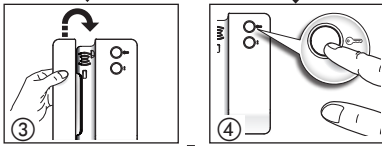


2- Programming the melody associated with a call from the entry panel

To listen to the melodies in sequence, press the 0 button ②.

To select the melody and exit programming, hang up the handset ③.

To select the melody and continue with programming, press the ⏪ button ④.

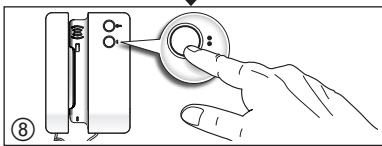
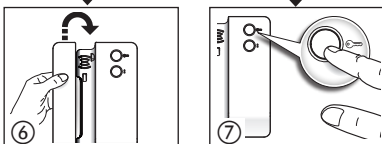


3- Programming the melody associated with a call from the floor

To listen to the melodies in sequence, press button 0 ⑤.

To select the melody and exit programming, hang up the handset ⑥.

To select the melody and continue with programming, press button ⏪ ⑦.

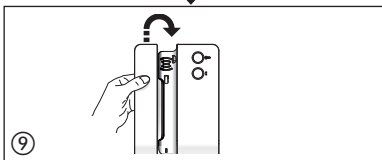


4- Programming the number of rings

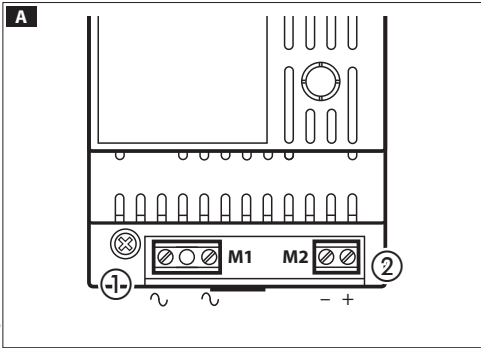
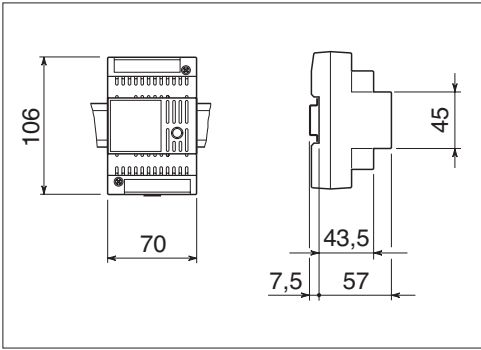
Press button 0 as many times as you want the call to ring (from 1 to 6 rings) ⑧.

Three seconds after the button is last pressed, the selected call is played back with the chosen number of rings.

To exit programming, hang up the handset ⑨.



☞ See the entry panel documentation for call programming.



001DC002AC

Installation

The power supplier must ALWAYS be installed horizontally. The device can be installed on a DIN rail (EN 50022) in an appropriate electric panel.

NOTE. Proper ventilation is required if the power supplier is installed in a metal container.

Technical features

Type	001DC002AC
Power supply [V AC]	230
Max current demand [A AC]	0,2
Max energy dissipation [W]	10
Nominal power supply [V DC]	18
Nominal current demand [A DC]	1 for 1'
Nominal current demand [A DC]	0.5 for 3'
Storage temperature [°C]	-25 ÷ +70
Operating temperature [°C]	0 ÷ +35
IP Rating [IP]	30

Features A

Terminal board ①

~ Mains

Terminal board ②

- + Power supply 18 VDC (*)

(*) The appliance is electronically protected against overloads and short circuits.

001DC011AC

Device description **A**

The 001DC011AC AC/DC converter is device designed for the installation of audio receivers and video receivers coupled with a compatible gate automatism equipped with an accessory output.

With just 4 wires that connect the gate with the audio receiver/video receiver kit, the device not only supplies the kit but it also allows you to operate the gate. Command 2-7 is executed by a clean contact (relay).

Technical features

Type	001DC011AC
Minimum input voltage (V AC)	20
Maximum input voltage (V AC)	25
Output voltage (V DC)	18
Output current (A)	1
Maximum operating relative humidity without condensation	95
Storage temperature (°C)	-25 ÷ +70
Operating temperature (°C)	-15 ÷ +50

Features of terminals 2 - 7

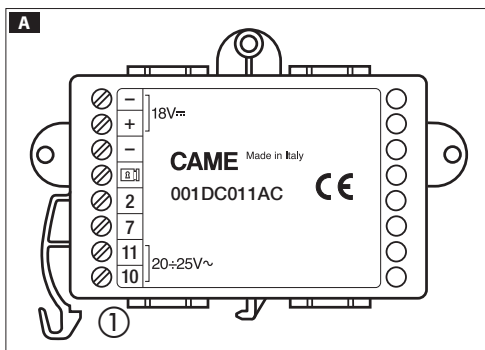
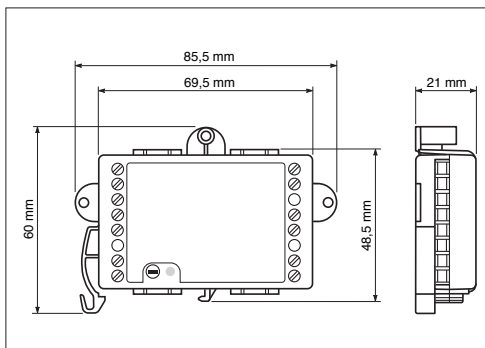
Control voltage: 12V - 12.5 mA

Maximum switching voltage: 50 V AC or 75 V DC

Maximum switching power: 60VA - 24W

Function of terminals

- +	18V DC supply output
2 7	Opening command output towards gate
10 11	Power supply input 20÷25V AC
- [B]	Opening command input from entry panel



001CS1PLC0

Wall mounting

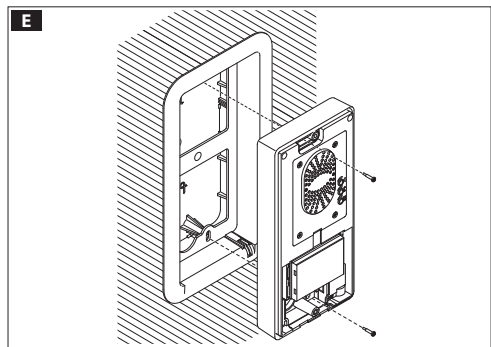
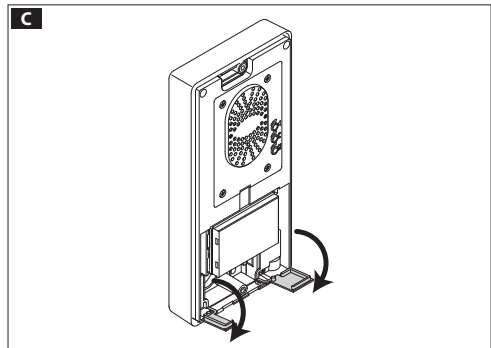
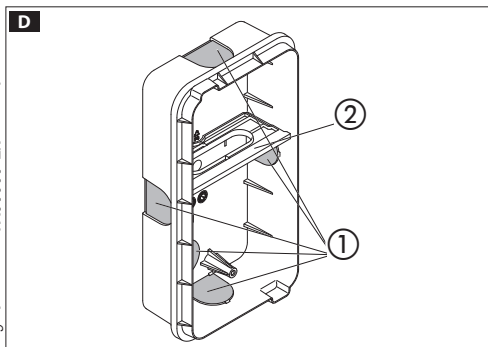
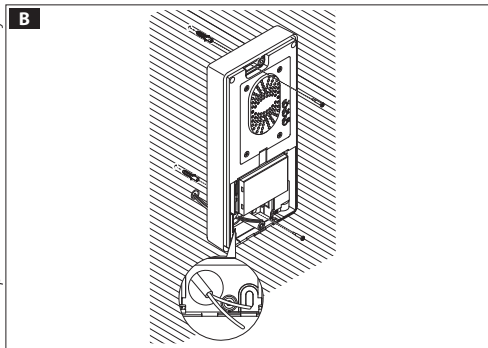
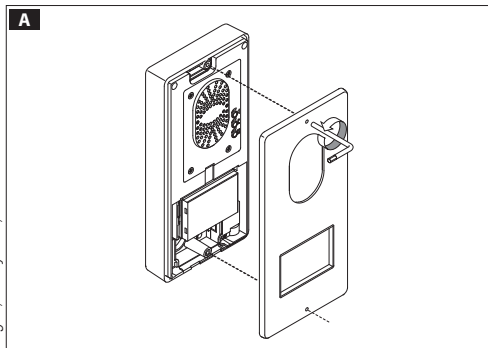
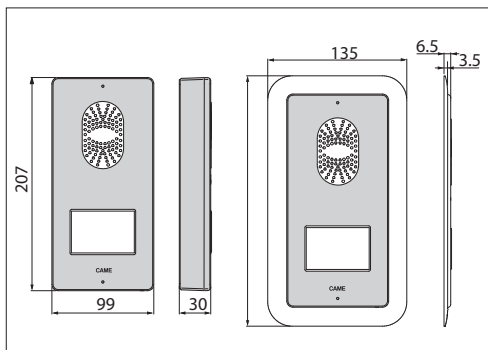
With the allen wrench unscrew the blocking screws and remove the plate **A**. Fix the given plugs and screw the entry panel **B** at the desired height. Run the hose with the system conductors **B**.

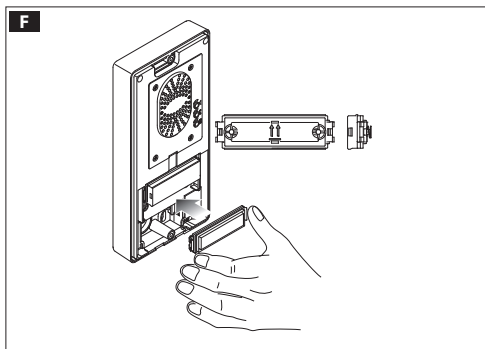
Extract the plastic terminal cover and wire the connections **C**. Once all the connections have been made, re-insert the terminal covers. For the installation of the accessories refer to the chapter "Button module installation". Perform the programming and adjustment operations of the entry panel as described to the chapter "Programming". Install the front plate **A**.

Recessed Installation (optional)

Install the recessed box at the desired height, but in advance, run the hose with the system conductors through one of the breaking points **D** ①. During installation of the recessed box it is possible to avoid any deformation by using the provided spacer **D** ②. With the allen wrench unscrew the blocking screws and remove the entry panel plate **A**. Introduce the cable connections in the special hole **B** and fix the entry panel on the frame **E**; extract the plastic terminal cover and wire the connections **C**.

Once the connections have been made and re-insert the terminal covers. For the installation of the accessories refer to the chapter "Button module installation". Perform the programming and adjustment operations of the entry panel as described to the chapter "Programming". Install the front plate **A**.

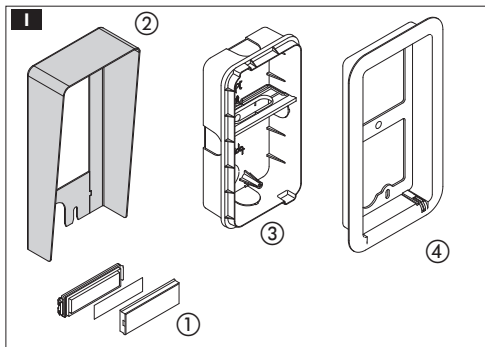
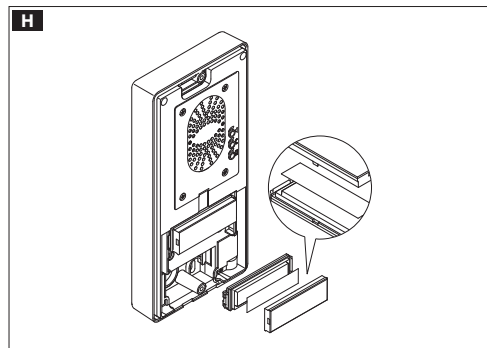
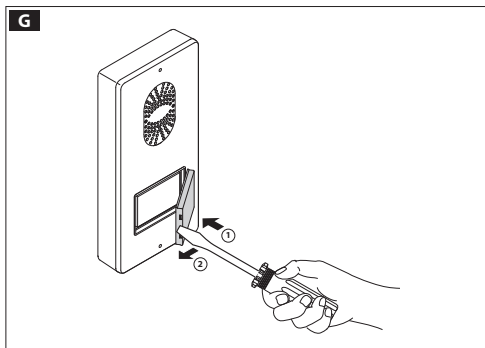




Button module installation

Insert the button module as highlighted **F** paying special attention to the top to bottom orientation **H**.

Remove the glass and write the user names **G**, paying special attention to the orientation of the glass **H**.



Accessories **I**

- 001DC00EGMA11 single button **1**,
- 001DC00PLACO01 Wall roof **2**,
- Recessed box 001DC00PLCO03 **3**,
- Recessed frame 001DC00PLACO02 **4**.

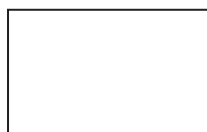
Technical features

Tipo	001CS1PLCO
Power supply [V AC]	16-18
Consumption [mA]	250
Consumption in stand by [mA]	100
Storage temperature [°C]	-25 ÷ +70
Operating temperature [°C]	-15 ÷ +50
IP Rating [IP]	54

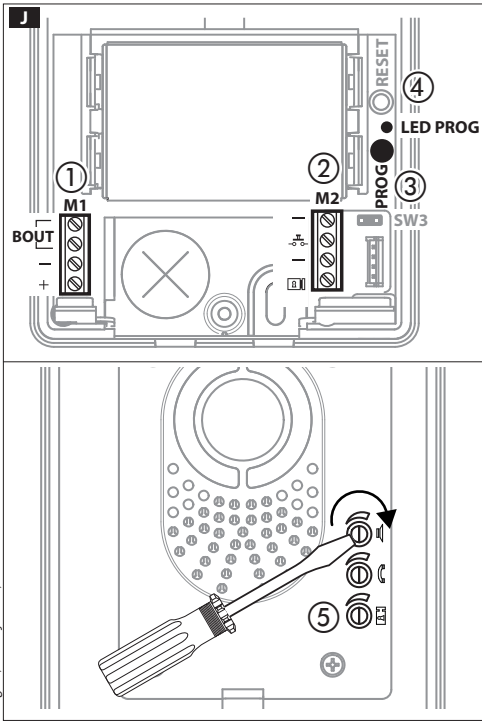
Personalized labels, dimensions



53x13x0,3 mm



53x33x0,3 mm



Features J

Terminal board ①

- BOUT Riser
- + Power supply 16-18 VDC
-

Terminal board ②

- Earth
- Door lock release button (NA)
- Solenoid lock
- 12 V 1 A max

PROG key ③ and PROG LED ④

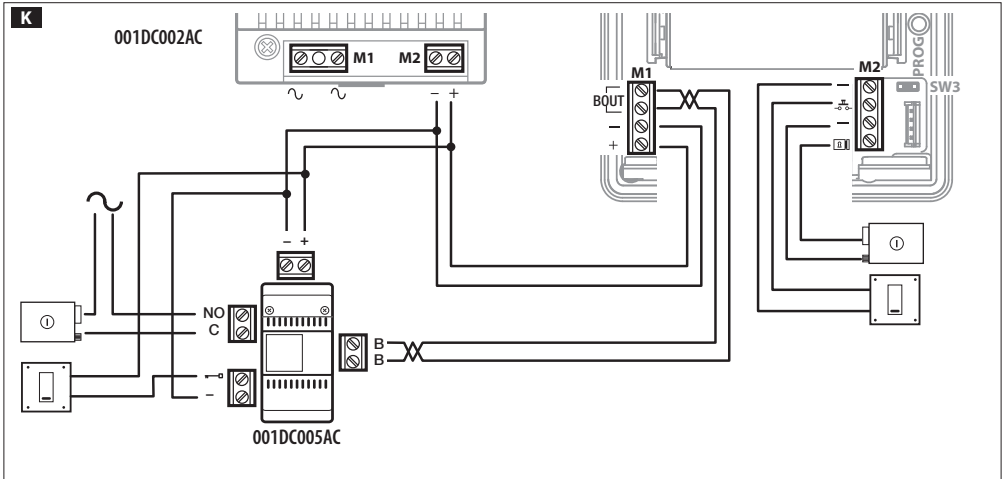
Programming key and LED (see 'Programming' paragraph).
The PROG LED can take on the following states:

- Off
- On
- Slow flashing
- Quick flashing

Adjustments ⑤

- loudspeaker audio
- microphone audio
- Solenoid lock 1-10 s. (default 1 s)

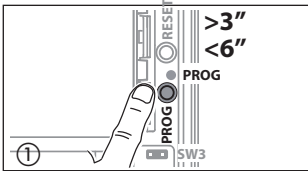
Connection example **K**



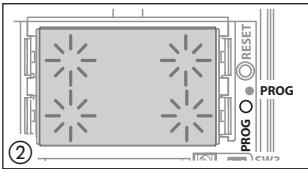
Programming

The kit is pre-configured to manage a single call originating from a single entry panel. One or more receivers answering the same call can be added, by following the below "Call button programming" procedure.

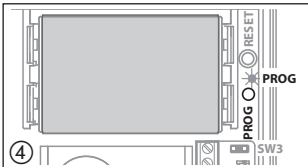
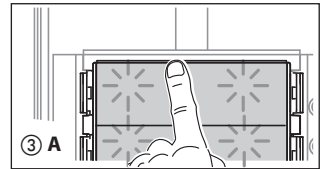
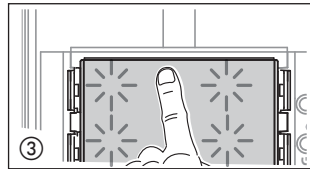
Initial programming



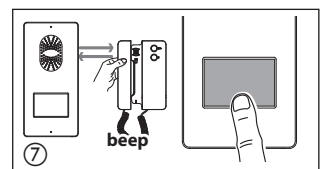
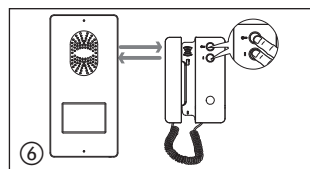
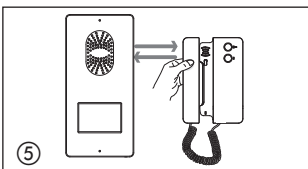
Entering Programming Mode. Press the PROG ① key for at least 3 seconds and then release it (within 6 seconds), as soon as the LED PROG lights up and the key back lighting flashes as illustrated in figure ②. Failure of the PROG LED to light up, indicates a malfunction. Check the connections and re-access the programming mode.

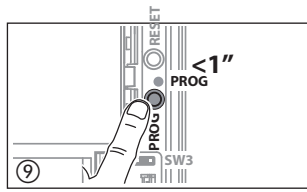
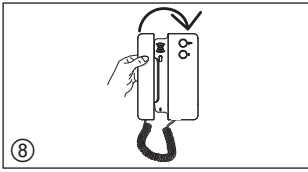


Programming of the Key Type. Press the first key of the entry panel in the position indicated ③/ ③A until the backlighting LED stops flashing ④ and remains lit.



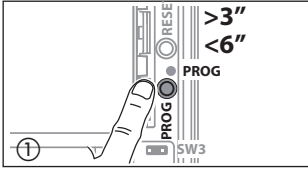
Programming the call keys. Lift the receiver (if present) of the extension that you want to programme ⑤ then press the door lock release and AUX2 ⑥ buttons. On the entry panel, press the call key to associate with the internal extension ⑦: an acoustic signal will confirm that the setting was stored. Hang up the receiver again, if necessary ⑧ and continue, repeating the same operations for the other extensions.



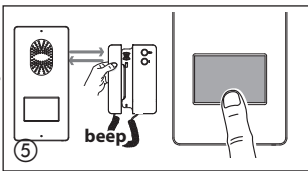
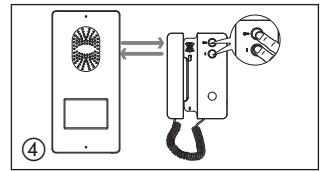
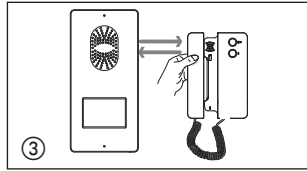
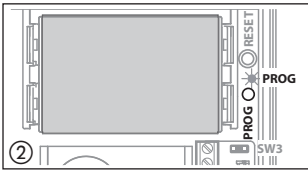


Exiting programming. Briefly press the PROG key ⑨: the PROG LED off. NOTE. If no action is performed, the procedure will automatically end after 30 minutes.

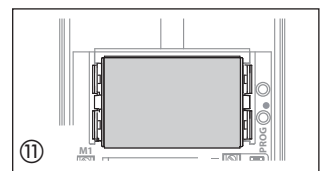
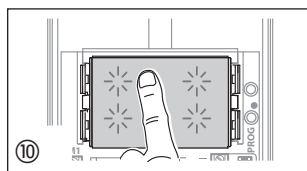
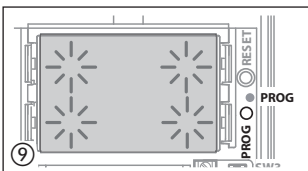
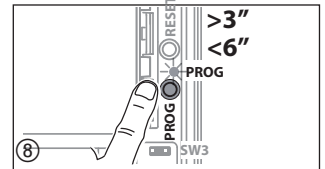
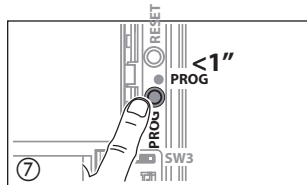
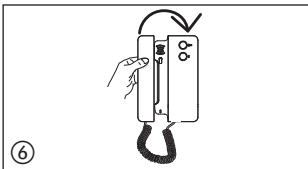
Reprogramming procedure



Entering Programming Mode. Press the PROG ① key for at least 3 seconds and then release it (within 6 seconds) as soon as the LED PROG light flashes and the key back lighting lights up as illustrated in figure ②. Failure of the PROG LED to light up, indicates a malfunction. Check the connections and re-access the programming mode.



Programming the call keys. Lift the receiver (if present) of the extension that you want to programme ③ then press the door lock release and AUX2 ④ buttons. On the entry panel, press the call key to be associated with the internal extension ⑤: an acoustic signal will confirm that the setting was stored. Hang up the receiver again, if necessary ⑥ and continue, repeating the same operations for the other extensions.



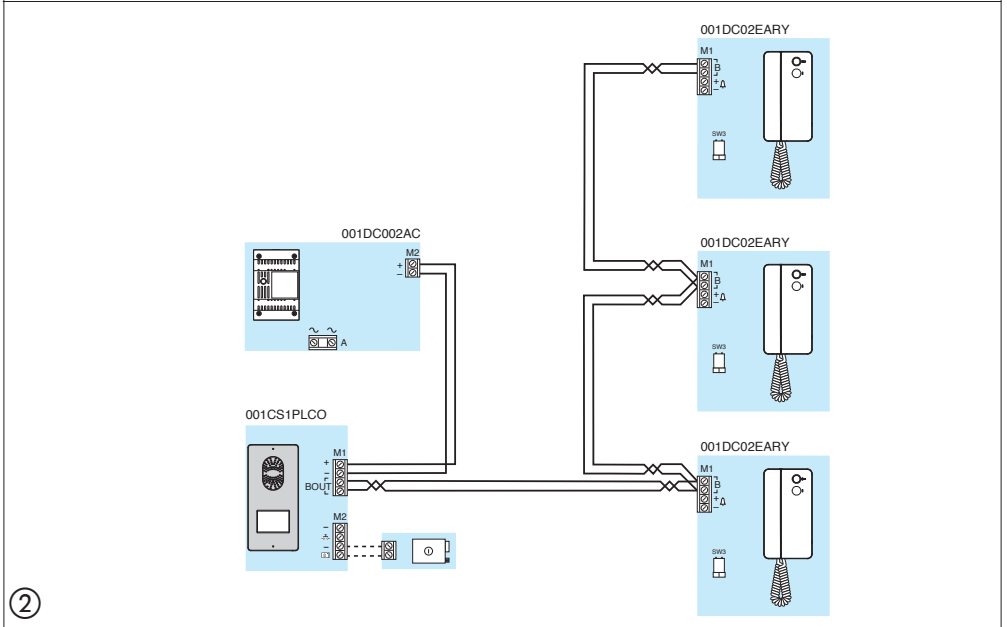
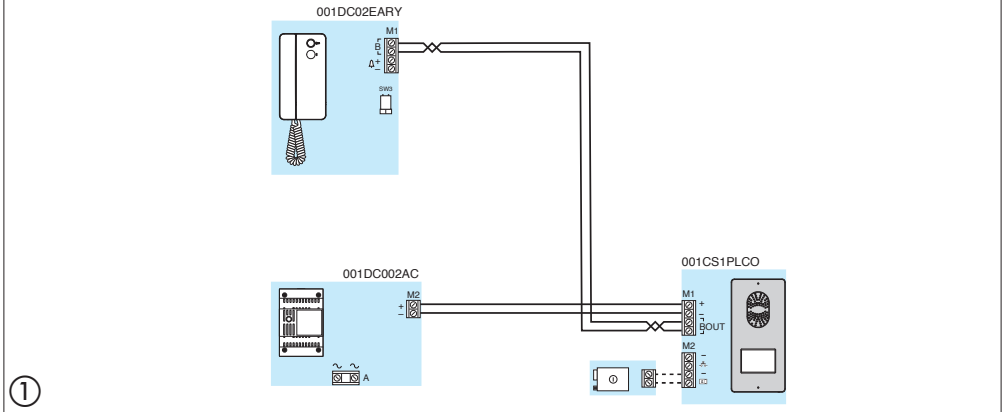
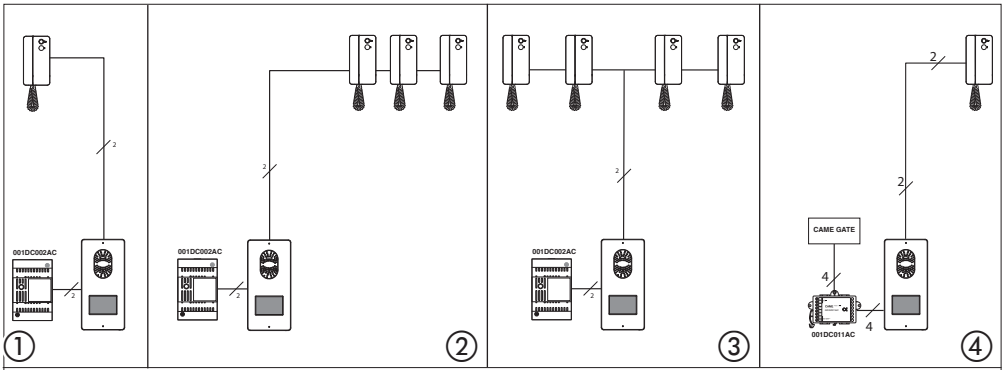
Exiting programming. Briefly press the PROG key ⑦: the PROG LED off. NOTE. If no action is performed, the procedure will automatically end after 30 minutes.

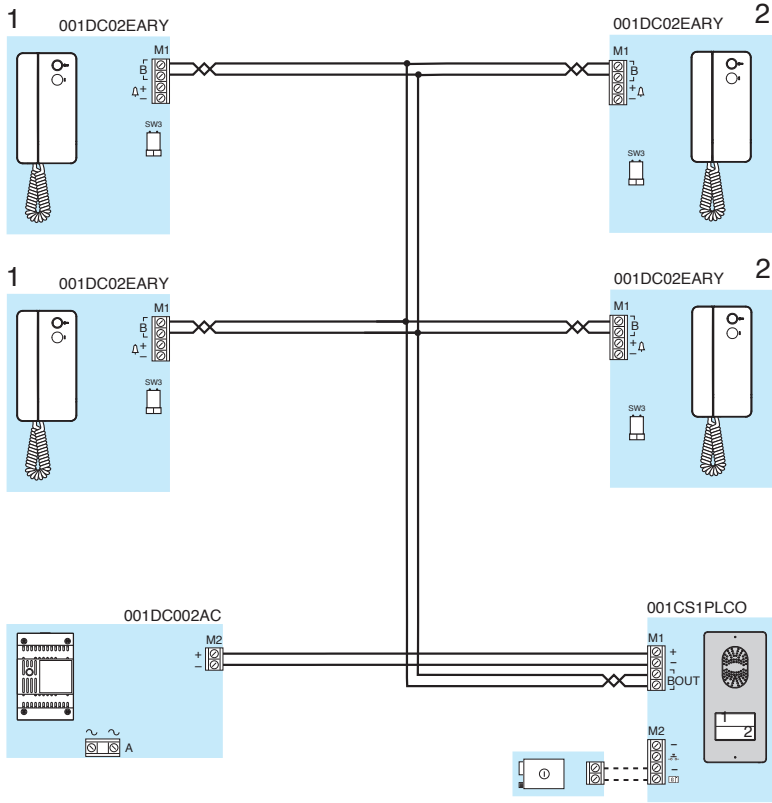
Programming key type. At the "Programming Call Buttons" stage, press the PROG ⑧ key for at least 3 seconds and then release it (within 6 seconds), as soon as the LED PROG lights up and the key back lighting flashes as illustrated in figure ⑨, entering "Programming Button Types/Combinations" as part of the procedure.

Press the first key of the entry panel in the position indicated ⑩ until the backlighting LED stops flashing ⑪ and remains lit.

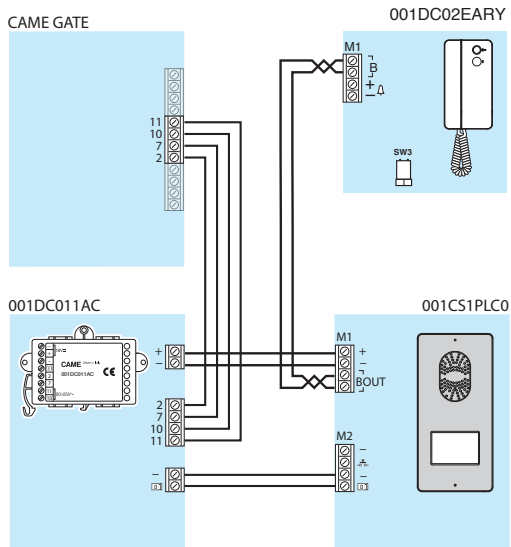
At the end, exit programming, briefly press the PROG key ⑦: the PROG LED will turn off. If no action is performed, the procedure will end automatically after 30 minutes.

Connection examples

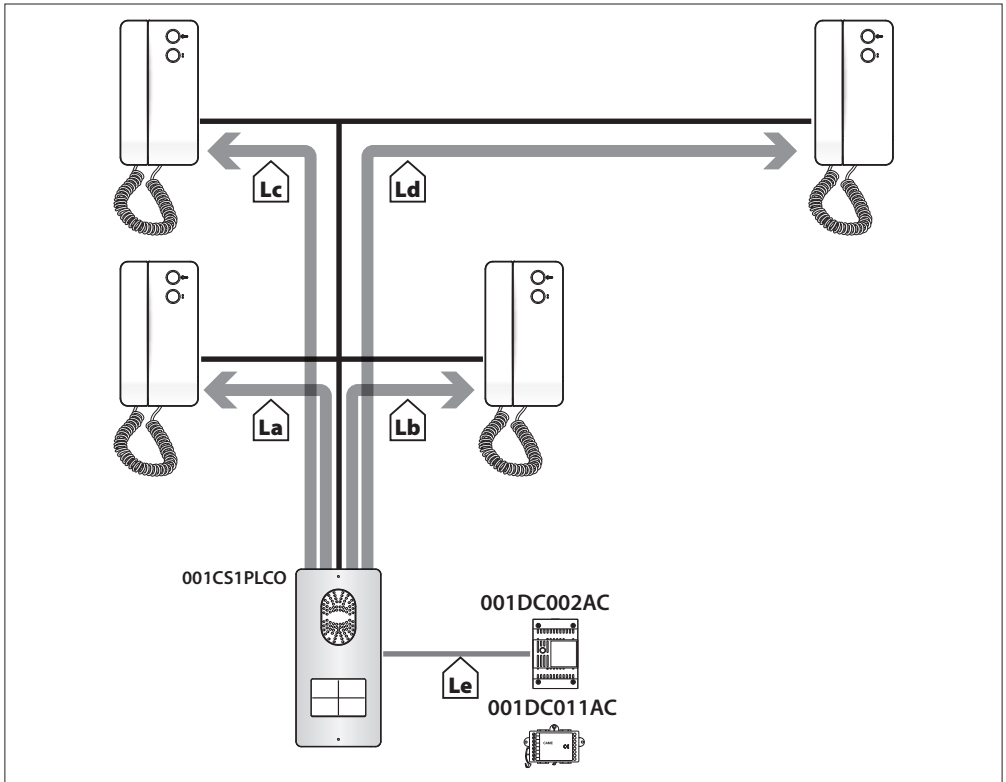





3



4



Distances				
	VCM/1D	VCM/2D	UTP/CAT 5	2x2,5mm ²
La, Lb, Lc, Ld	≤250 m	-	≤250 m	-
Le	≤25 m	-	-	≤60 m
La(Lb, Lc, Ld)+Le	≤250 m			



CAME.COM

CAME S.P.A.

Via Martiri Della Libertà, 15
31030 Dosson di Casier - Treviso - Italy
tel. (+39) 0422 4940 - fax. (+39) 0422 4941